

# MAIN LINE SKI CLUB SKI TRACKS

Visit our website [www.mainlineskiclub.com](http://www.mainlineskiclub.com) for current information

**SEPTEMBER  
HAPPY HOURS  
WILL REMAIN  
OUTSIDE!**

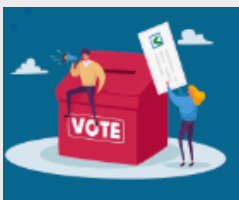
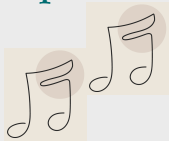
SEPTEMBER 26TH



September 24th  
To the racetrack!



September 18th  
Jazz



Voting remains  
open until Sept.  
17th

## *A Message from our President*

Hello to everyone as we journey into September. Is it really Fall? Well, we have lots to look forward to these next 2 months.

Is the Almanac correctly forecasting a cold snowy winter? Your Board has approved trips to Snowmass CO, Saint Anton Europe, and Okemo VT. There are no date overlaps. Hopefully some lucky attendees from September's member meeting could catch the last few remaining slots.

Each member recently received our online survey. We are asking for your input on member meetings, and to elect officers. If you missed the emailed invitation, please sign into our website & participate via the 'Surveys' tab. We have extended the deadline to Saturday, September 17th.

September happy hours will remain outside, then we will relocate once there is nip in the air. We've had decent turnouts for museums, pool parties, a kayak trip and other events throughout the summer. Fall plans include hikes, wine n' dines, a Sunday game watch, music & theater events, and on-going special site visits. Tennis restarts in November. Planning for a spring road rally has started.

Finally, I want to remind everyone to sign in to our home page and renew your membership by October 1st. It may seem like ages have passed due to last year's renewal being complimentary due to Covid disruption.

We hope to see each of you, and friends you invite, at upcoming events.

Best,

*Ralph von dem Hagen, President*





September 16th	Happy Hour at The Great American Pub Rooftop
September 17th	Deadline to participate in Club Survey
September 18th	Jazz Concert in Wallingford, PA
September 24th	Simeone Foundation Auto Museum, Monthly Museum
September 26th	EPSC Charity Gold Outing
September 28th	Happy Hour at The Desmond Deck
October 11th	Member Meeting & Social, location TBD
October 14th	Happy Hour at Autograph
October 16th	Talk Cinema at Bryn Mawr Film Institute
October 16th	Hike & Lunch at Ridley Creek State Park
October 25th	Activities Planning Committee Meeting
October 26th	Happy Hour at Belrose 333
October 30th	Eastern State Penitentiary, Museums Monthly
October 30th	Eagles vs. Steelers Watch at P.J. Whelihan Malvern

MLSC  
**WINTER TRIPS**

January 17th	European Ski Trip
February 5th	Okemo VT Trip
February 25th	Snowmass Trip



Eastern Pennsylvania Ski Council is our umbrella organization which sponsors ski programs, enables clubs to cross advertise trips, offers ski discounts, and sponsors several charitable events in support of our sport.

Nearly all EPSC income comes from an annual golf tournament. This years event is on September 26 at Turtle Creek. Our Board has voted for our club to sponsor a hole. In addition, I am hoping we can field a foursome from our membership. Golf, food and prizes for the day is \$105 apiece. We have two so far. Please call Ralph von dem Hagen if you would like to participate.



**Eastern PA Ski Council**

**Co-Sponsored by Merck Ski Assn.**

**3rd Annual Charity Golf Outing**

**Monday, September 26, 2022**

<p><b>Golf Registration</b></p> <p>Entry Fee, Cart, Food and Prizes</p> <p>Single..... \$105</p> <p>Foursome.....\$420</p>	<p>Proceeds to Benefit</p> <ul style="list-style-type: none"> <li>Charity of your Choice</li> <li>Vote for your favorite charity</li> <li>Choices of Charities</li> <li>Special Olympics</li> <li>PA Center for Adapted Sports</li> <li>Wounded Warrior Patrol</li> <li>PA SnowSports Museum and Hall of Fame</li> </ul>
--	--

Turtle Creek Golf Course

Limerick, PA

Tee Time 12pm

Beverage Cart Dinner to Follow

**MAIN LINE SKI CLUB IS BUILDING A TEAM FOR  
THE EPSC CHARITY GOLF OUTING.  
WOULD YOU LIKE TO JOIN US?**

**CONTACT: RALPH VON DEM HAGEN**  
**VONDEMHAENR@MSN.COM**  
**484-798-8818**



## JOIN MAIN LINE SKI CLUB AS WE TOUR THE SIMEONE FOUNDATION AUTO MUSEUM

**Saturday, September 24th**

**10 a.m. Meet at Ticket Counter** to begin our tour

Tickets can be purchased at the Museum or online  
General Admission \$12 : Seniors: \$10

**1:30 Luncheon Di Fabio's 9th Street Market**

Email Barbara to be included in our lunch reservation.

9/24 is a DEMO DAY – which means at 11 a.m. there is a discussion of the vehicles (Ettore Bugatti: T35, Atlante, 57G Tank) being driven, their technical aesthetic and historical relevance and then a drive around the track.

The Simeone Foundation Auto Museum  
6825 Norwitch Drive, Philadelphia, PA

## EASTERN STATE PENITENTIARY

**SUNDAY OCT 30, 2022**

**10:30 TOUR**

**1:30 LUNCH**

Tickets must be purchased online:

**Please purchase ASAP** the Guide Led Tour at 10:30.  
Adults \$17, Seniors \$15.

We will meet at the entrance

**AFTERWARDS: 1:30 Lunch at Jack's Firehouse,**  
2130 Fairmont Ave. Philadelphia, PA 19130.  
One block down from Penitentiary.

Please RSVP to be included in our lunch reservation.

### America's Most Historic Prison

Eastern State Penitentiary was once the most famous and expensive prison in the world, but stands today in ruin, a haunting world of crumbling cellblocks and empty guard towers. Its vaulted, sky-lit cells once held many of America's most notorious lawbreakers, including "Slick Willie" Sutton and "Scarface" Al Capone.



## 2022/23 BOARD MEMBER ELECTIONS

+ MEETINGS SURVEY

*We appreciate your votes!*

THANK YOU, MEMBERS, FOR PARTICIPATING IN OUR ANNUAL BOARD MEMBER ELECTIONS. IN ADDITION, WE ARE GATHERING FEEDBACK TO MAKE OUR MEMBER MEETINGS BEST FIT OUR MEMBERSHIP.

WE HAVE EXTENDED THE DEADLINE TO SEPTEMBER 17TH FOR ANYONE WHO WOULD STILL LIKE TO RESPOND VIA OUR WEBSITE.



Join us as

# MLSC GOES HIKING

October 16th, 2022  
10AM Hike

- ▶ RIDLEY CREEK STATE PARK
- ▶ ALL ABILITIES WELCOME
- ▶ LUNCH TO FOLLOW

RSVP to Cindy Doan





JOIN MLSC

## INDOOR JAZZ CONCERT & LIVE STREAM

FEATURING  
ROSSANO SPORTIELLO, PIANIST

**SUNDAY, SEPTEMBER 18TH ~ 2PM**

COMMUNITY ARTS CENTER  
414 PLUSH MILL ROAD  
WALLINGFORD, PA



Rossano Sportiello

Sunday, September 18 at 2:00 pm

Join Main Line Ski Club members as we enjoy an afternoon jazz each month.

General Admission is \$20. Tri State Jazz Members pay \$10. You can pay for a membership at the gate.

If interested, please contact Judy at [Judith.Lafontaine@gmail.com](mailto:Judith.Lafontaine@gmail.com)

WE ARE  
GOING AGAIN!



"BE THE FIRST TO SEE AND PREVIEW YET-TO-BE RELEASED INDIE AND FOREIGN FILMS CURATED BY FILM CRITIC HARLAN JACOBSON AND DISCUSS WITH SOME OF OUR NATION'S BEST SCHOLARS AND CRITICS. SEE FILM AS INDUSTRY INSIDERS--WITHOUT PRECONCEIVED IDEAS--THEN DISCUSS WITH YOUR HOST AND THE AUDIENCE."

BRYN MAWR FILM INSTITUTE

**OCT | 10  
16TH | AM**

824 LANCASTER AVE, BRYN MAWR

MAIN LINE SKI CLUB MEMBERS, MEET US THERE!

TICKETS CAN BE PURCHASED ON THE WEBSITE:  
\$18 BMFI MEMBERS OR \$20 GENERAL ADMISSION.

ALL PATRONS & STAFF MUST SHOW PROOF OF COVID-19 VACCINATION. BMFI HAS OPEN SEATING UPON ARRIVAL

IF INTERESTED, PLEASE CONTACT JUDY AT  
[JUDITH.LAFONTAINE@GMAIL.COM](mailto:JUDITH.LAFONTAINE@GMAIL.COM)



# SAYING GOODBYE TO SUMMER. LET'S NOT FORGET THE GOOD TIMES WE HAD.



What a wonderful time 31 MLSC & Tiroler Ski Club members had at August's picnic/pool party. Folks came & went on their own schedule. They brought their own food & drink and also shared goodies with others. The pool was 89 degrees - so easy to get into & enjoy. Swimmers floated from one conversation group to another, meeting new people or enjoying old friends, and/or played volleyball and/or enjoyed a beverage that had been sitting on the pool's edge. Starting around 4:00 watermelon so sweet & juicy you could hardly believe it was real was enjoyed. While the conversation flowed Fletcher grilled burgers, Jay went out for pizza, and groups ate & enjoyed what they each had brought. The venue was great the people who attended were even better; how nice to belong to our ski & social clubs.

Why don't you attend a club event, or even better lead one? Ski & Socialize well & safely, Jay & Ellen Minnicks